

HOGTUNES

Audio Solutions For The Great American Cruiser



225RG KIT-AA

High Performance Front Speaker and Amplifier Kit

FOR USE ON 1998-2013 "ROAD GLIDE" MODEL BIKES WITH FACTORY RADIOS

INSTALLATION MANUAL

READ ENTIRE MANUAL BEFORE STARTING INSTALLATION!!

Damage To Inner Fairing WILL Occur If Factory Screws Are Used To Attach New Speaker Grills To Your Bike. Hogtunes Assumes ZERO Responsibility For This! The Correct Screws Are Provided In This Kit.

STOP

Thank you for choosing the Hogtunes 225 RG KIT-AA for 1998-2013 Road Glides. Since positive word of mouth is the best way to grow our business, we want your new system to work as well as it was designed to. If you have any questions or concerns, we are here to help.

The REV 225-AA amplifier is a Class D design. It should be understood that ALL Class D amplifiers, REGARDLESS OF BRAND, cause a reduction in FM reception. The REV 225-AA features a proprietary circuit design called R.E.M.I.T. (Reduced Electro Magnetic Interference Technology) that Hogtunes believes gives the BEST FM reception available for any Class D Amplifier designed for a motorcycle. If you add a 2nd or 3rd model amplifier to your system, reduction of FM reception is increased and is considered normal.

Hogtunes understands that some riders prefer the cosmetics of in fairing antennas, however it should be noted that NOTHING works as well as the factory antenna. If FM is an important part of your riding experience, we strongly advise against the use of any in fairing type antenna!

To help protect your bike's electrical system and battery, the amp has a built in feature where it will turn itself off if it sees less than 10.5 volts, whether the bike is running or not. If you're listening to your stereo while not riding, this feature can help protect your battery so the bike can still start. If you're riding and the amp shuts off, this could be showing a potential issue with your charging system. If this feature is activated and the amp shuts off, it will turn the amp back on again if the voltage exceeds the 10.5 volt threshold.

REV 225-AA is rated for 112.5 watts per channel @ 2 ohms. Although this amplifier makes its highest power with 2 ohm speakers, if Hogtunes 5.75 ohm speakers or 4 ohm car speakers are used there will still be a noticeable improvement in volume and sound quality.

*A video version of this manual is available at
www.hogtunes.com/support/videos.html
If you still need assistance, please consider a professional
installation by your motorcycle dealer.*

Hogtunes Contact Information

Email: tech@hogtunes.com
(USA) 608-554-7631 • Canada) 705-719-6361

INSTALLATION INSTRUCTIONS

- Step #1: Remove the seat and both wires (+ and -) from the battery.
- Step #2: Remove the outer fairing/headlamp assembly and set it aside. Refer to a service manual if you need help with this. NOTE: A towel on the front fender can help prevent scratches or “dings” from dropped tools or fasteners etc. Expletives will also be kept to a minimum!
- Step #3: On the brake side, inside of the of the inner fairing, there is a wire “strap” that secures a 3-wire harness (black, blue and brown) to the bike. Take the wire out of this strap and let it hang. The “A” arrow in Figure 1.1 is where a larger factory “Molex” plug is secured to the bike (if present). Pull down on this Molex to unclip it from the frame and let it hang for now. NOTE: Newer model bikes have this Molex located elsewhere.

The “B” and “C” arrows in Figure 1.1 show the nuts that need to be removed on the brake side of the bike so the steel plate and amp can be mounted using these 2 main studs. There is a triangular “notch” on the plate which will be at the bottom when correctly installed. Once the plate is on, re-install these nuts to factory torque specifications. The Molex that was removed from the frame (arrow “A”) can be re-secured to other wire harnesses using supplied zip ties (if Molex is present). There is “hook and loop” adhesive in the box. One half will be applied to the plate, and one side will be applied to the back of the amp. To make sure the fairing will go back on, attach the amp on the plate high enough up but not quite touching the gauge just above the amp. The outside edge of the amp (closest to brake side speaker) should be close to flush to the outside edge of the plate.

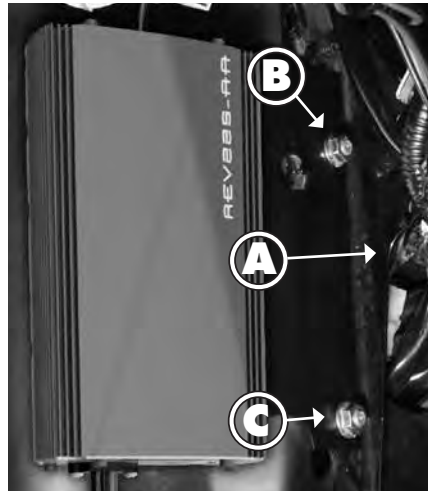


Figure 1.1 - Amplifier correctly positioned on bike.

- Step #4: Unplug the factory wires at each front speaker. Locate and remove the 3 torx head screws and single speed nut that holds each speaker grill to the bike. The speakers and grills will come away from the inner fairing as one unit.

Step #5: Separate the Hogtunes speakers from their grills. If you want to use the supplied steel mesh grills, continue to Step #6. Keeping the stock grill cloth look, take the stock grills and CAREFULLY separate the factory plastic mesh that holds the grill cloth from the main grill "ring". Carefully remove the Hogtunes steel mesh from the Hogtunes ring. Your factory mesh/grill cloth should have enough "tack" to stick onto the Hogtunes ring but will be properly secured when the grills are installed.

Step #6: Included in this kit is a bag with six Phillips head screws. Using these **supplied** screws, install each 3572-AA grill to the bike and re-install the stock "speed nut" on each side. Re-attach the 5x7's to their grills using the screws you took out in Step 5, noting that the speakers must be oriented in the grills so the wire connectors are closest to the radio.

DO NOT USE FACTORY SCREWS TO ATTACH NEW GRILLS TO FAIRING!

WIRING THE AMPLIFIER

Step #1: Locate the main power connector and plug it in to the mating connector on the amp. Locate the audio input harness and plug its 8 pin harness into "Audio Input" on the side of the amp.

Step #2: On the input harness, locate the yellow/black pair of wires with the male connectors and plug them into the factory speaker wires on the clutch side of the bike. Also on the input harness, locate the green/black pair of wires with the male connectors and plug them into the factory speaker wires on the brake side of the bike. The connectors are sized correctly and will only go in one way. NOTE: The blue 4 pin plug with black wires on the input harness is an "expansion port" which is used to send music to a second amp or is used to send radio power to run other speakers on the bike. You can see how the expansion port can be used further on in this manual.

Step #3: On the opposite side of the amp are 3" (75mm) wires ending with a 4 pin black connector. This plug sends amplified power to the speakers. Locate the 4 pin black plug wire harness with brown/black and blue/black wires. Plug it into the amplified output plug. The blue/black wires will plug directly to the speaker on the brake side of the bike. The brown/black wires will plug directly to the speaker on the clutch side of the bike.

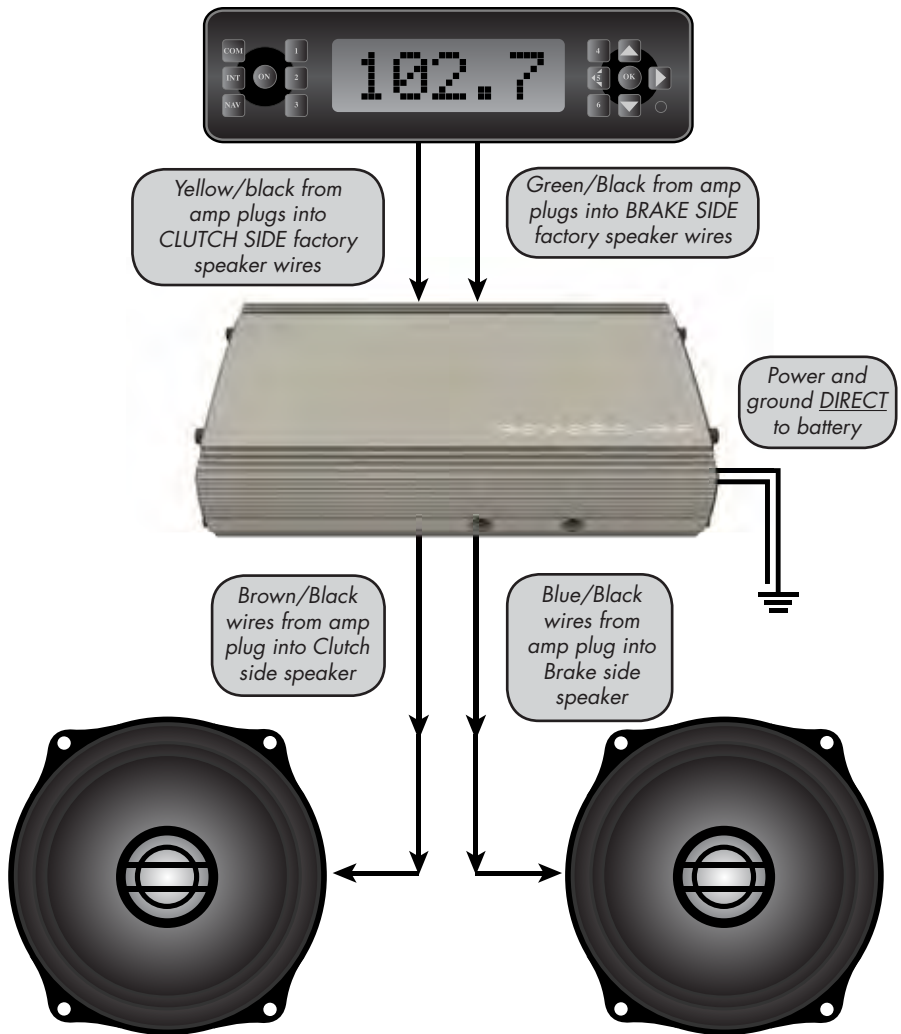
Step# 4: On the brake side of the bike, in front of the gas tank, on the side of the frame's backbone, there is a rectangular opening where a large wire harness (and throttle/idle cables on '98-'07 bikes) pass through from the fairing side of the bike. The red and black wires for the amp will pass from the fairing side through the large opening under the radio and through the rectangular opening.

HINT: "Fishing" a small piece of wire through this opening first, taping the red and black wires to the fish and then using the fish to feed the wires through may reduce install time. Loosen the tank console and run wires up and over the gas tank, but under the tank console. There is a provision on the front of the tank console for wires to pass. Secure the amplifier's harness to the bike's factory harness using zip ties.

Step# 5: Attach the red wire to the positive (+) battery terminal and the black wire to the negative (-) battery terminal. The factory battery wires are also re-installed at this point. Secure the amplifier's wire harness to the bike's factory harness along the frame and behind the tank using supplied zip ties.

Step# 7: Turn the bike's ignition to the "ACC" position and turn the radio on at low volume making sure the system is working. Using supplied zip ties, "clean up" the wiring inside the fairing. For best possible FM reception, DO NOT attach any of the amplifier's wiring to any factory antenna wires. Doing so will hurt the radio's ability to receive FM signals! There is a large wire harness right under the back of the radio that sits just behind the "hooks" that the outer fairing clips on to. Zip tie any Hogtunes wire to this main harness so that no wires are in the way of these hooks. Otherwise the outer fairing will not go on and, like Step #1 in this manual, expletives will be kept to a minimum.

AMPLIFIER WIRING DIAGRAM



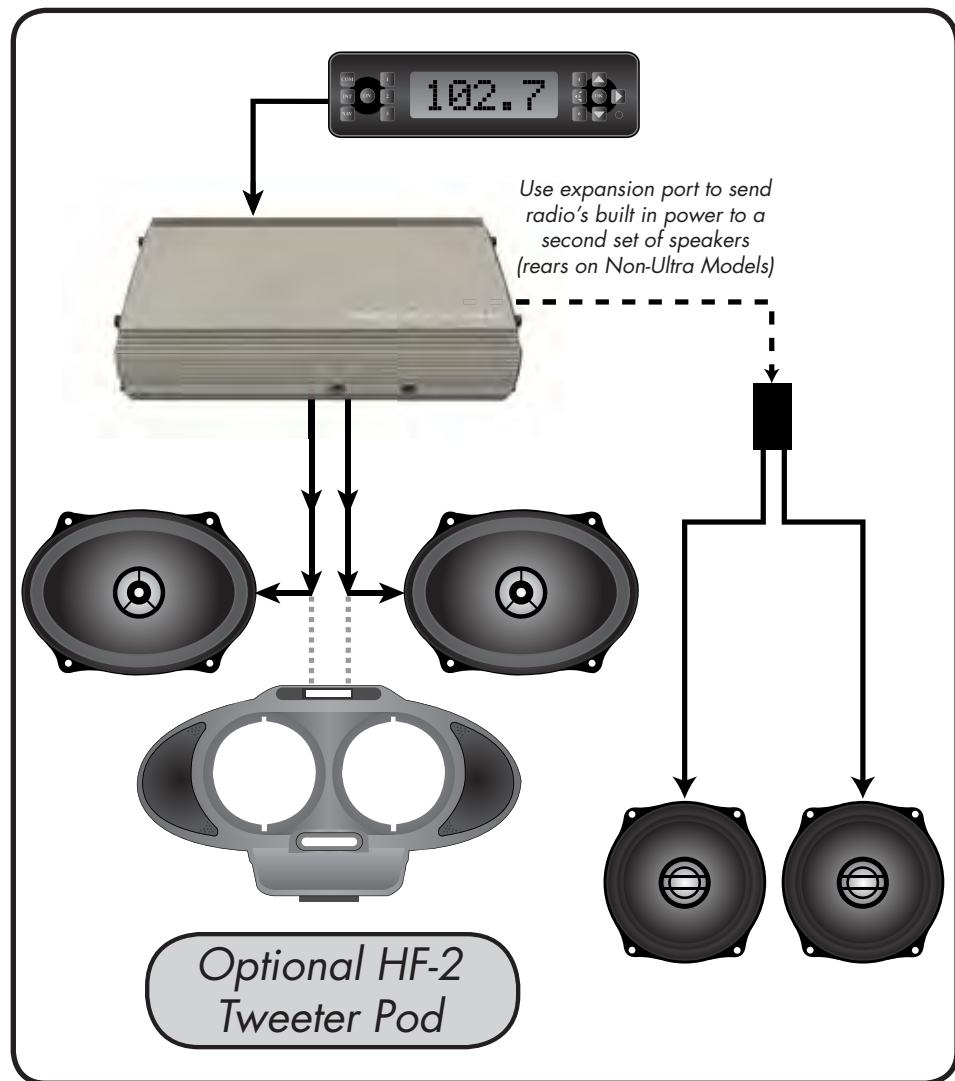
AMPLIFIER WIRE COLOR CODES

- Yellow/Black: Clutch Side Amplifier Input From Factory Radio
- Brown/Black: Clutch Side Radio Output to Front Speaker
- Green/Black: Brake Side Amplifier Input From Factory Radio
- Blue/Black: Brake Side Radio Output to Front Speaker
- Red: 12v Positive—Attaches Directly to "+" Battery Post
- Black: 12v Negative—Attaches Directly to "-" Battery Post

SYSTEM UPGRADE #1

This system is an easy way to add rear speakers to the bike if it has a King Tour-Pak®. Hogtunes rear speaker pods come with a wire harness set up for quick detach Tour Paks that will plug right into the expansion port on the amp.

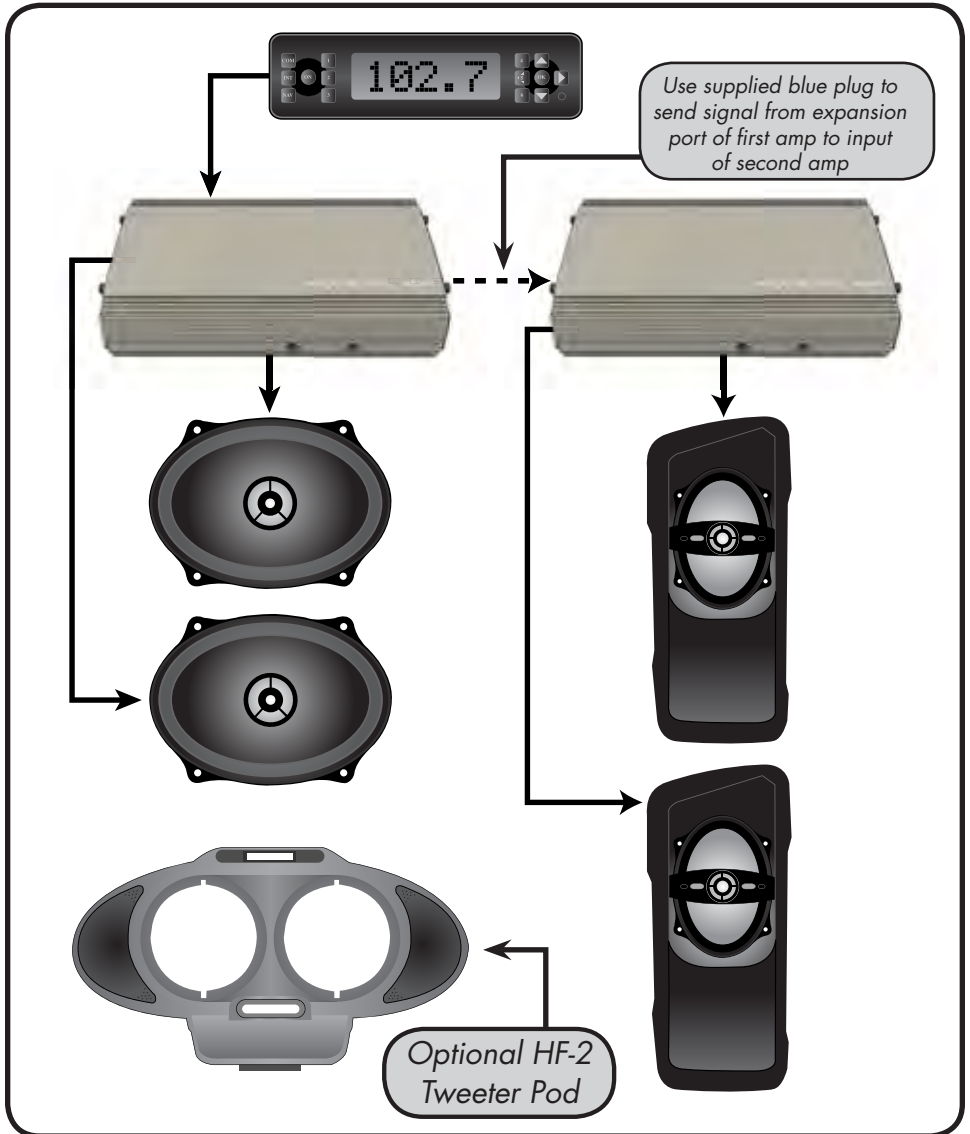
IMPORTANT: Since the **RADIO** power will be used to power the rear speakers, you must use rear speakers specific to your year of bike!



SYSTEM UPGRADE #2

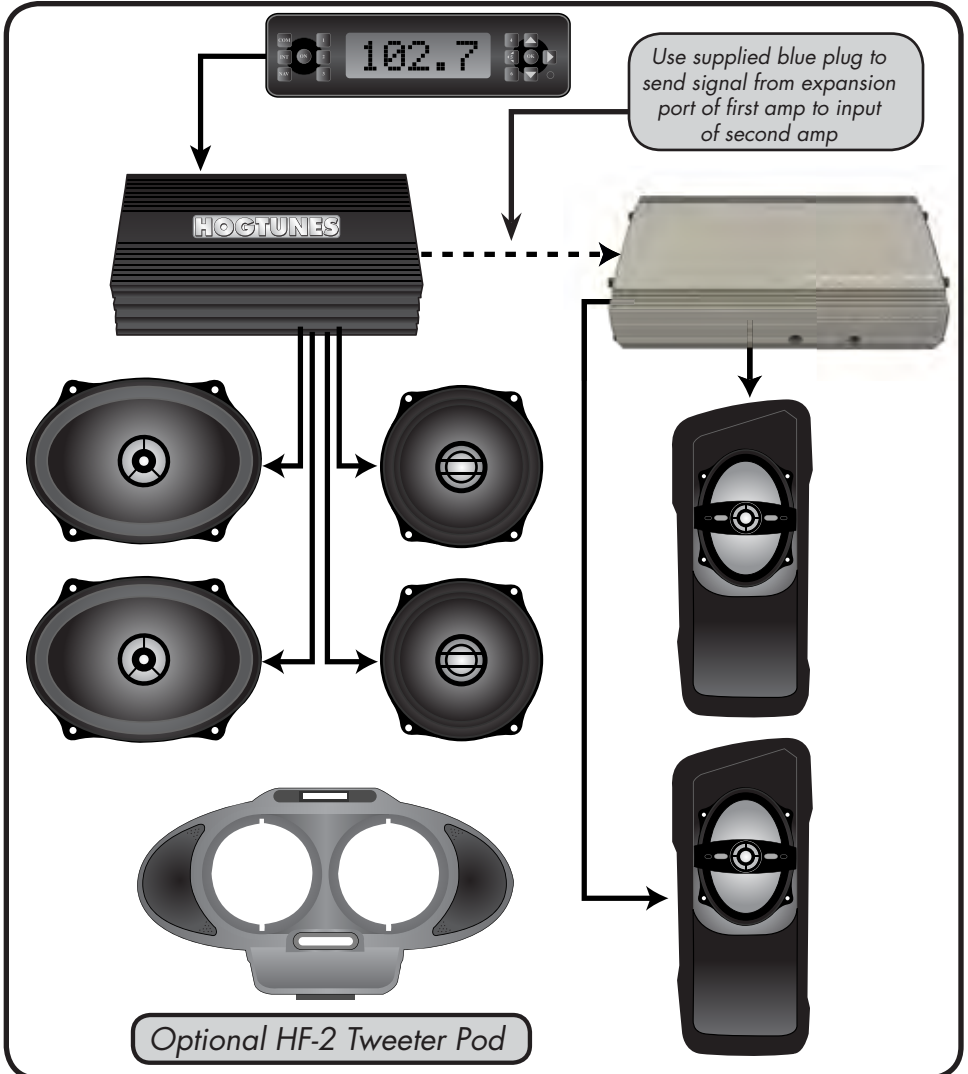
This system has the incredible power of two (2) REV 225-AA Amplifiers! The amp that came in this kit will power the 5"x7" fairing speakers while the second amp will bolt in and can be used to power Hogtunes 6"x9" saddle bag speaker lids or fairing lower woofers.

NOTE: To mount the 2nd REV 225-AA, the Hogtunes RG 40.4 Adaptor plate or RG4CH-AA is required.



SYSTEM UPGRADE #3

This system uses an NCA 450-AA (200 watt 4 channel amplifier) as well as Hogtunes REV 225-AA (225 watt 2 channel amplifier) for the Ultimate in real power! As shown below, a typical system would have the 4 channel amplifier power the fronts (and tweeter pod if present) and rears. The bypass out of the 4 channel sends music to the REV 225-AA which then powers 6"x9" saddlebag speaker lids or 7" fairing lower woofers. If the bike doesn't have a Tour Pak, you can also do a similar system with front speakers and tweeter pod, fairing lower woofers and 6"x9" saddlebag lids. The beauty of either system is that it can all be done in stages. It is 100% bolt in and 100% plug and play.



ADJUSTING YOUR SYSTEM-PLEASE READ!

In order to make this new system perform as well as it was designed, please take a minute to understand and follow these tips:

- 1) Set this "Automatic Volume Control" (AVC) to 3 bars. After extensive on-road testing, we found that this AVC position works and sounds best. This new amplifier has been specifically set-up for this radio setting.
- 2) This Hogtunes system is designed specifically for a motorcycle at speed. Exhaust noise and wind noise have been taken into careful consideration in how your system performs. How this new system sounds in a driveway or garage is radically different from how it will sound at highway speeds. Although your system was set-up with a factory radio, with its bass and treble controls in the middle position, if you feel the need to make adjustments please do so (carefully) at your normal cruising speed.
- 3) If there is an aftermarket car radio on your bike, its functions will work fine. Please remember that car radios are designed to work in an environment with little or no exhaust or wind noise. Many car radios have features such as equalizers, loudness contours, surround effects, etc. These are all designed for a quiet environment and all of which will hurt the ability to hear your motorcycle system at speed if left on. Please take a minute and turn as much of these features off. With a car radio in your bike, the only adjustments you should be able to access for best performance are volume, bass, treble, balance and fader.
- 4) If using an external device to supply music through the radios AUX port, we have an article on our website that can help make your peripheral audio device sound as good as possible. The article is at: http://www.hogtunes.com/techzone_files/Level_matching.pdf

TECHNICAL SPECIFICATIONS

Hogtunes REV 225-AA Amplifier

RMS Power at 2 Ohms:.....112.5 watts x 2
Freq. Response:30hz-25khz
Fuse at Amp:15 amp

Hogtunes 3572-AA Front Speakers

Power Handling:100 RMS-150 Peak
Frequency Response:55hz-25Khz
Sensitivity:92 db 1 watt/1 meter
Nominal Impedance:2.0 Ohms
Cool Factor:EXTREME

WARRANTY INFORMATION

IMPORTANT: In the event of a warranty claim, please fill out the form in the Warranty section of our website, or contact us by email or by phone. Valid claims will have an Return Authorization Number (RA#) generated which **MUST** appear on the outside of the box when it arrives to our office.

Goods Arriving Without an RA# Will Be Refused!

Please Record Your Amplifier's Serial # Here _____

Hogtunes speakers are warranted for a period of 20 years. The REV 225-RM Amplifier is warranted for 3 years from original purchase date. Proof of purchase is required for all warranty claims. The warranty applies to the original retail customer and is not transferable. Please contact Hogtunes for all warranty claims. Products found to be defective during the warranty period will be repaired or replaced (with a product deemed to be equivalent) at Hogtunes sole discretion. Hogtunes complete warranty policy is available on our website at:

www.hogtunes.com/warranty.html

What Is Not Covered:

- 1) Any expense related to the removal or re-installation of Hogtunes products.
- 2) Repairs to these products performed by anyone other than Hogtunes.
- 3) Subsequent damage to any other components.
- 4) Any product purchased from a non-authorized Hogtunes dealer.
- 5) Damage to Hogtunes products due to an accident or collision.
- 6) Hogtunes Amplifiers with broken or removed "warranty void" stickers.
- 7) Damage due to water from custom installations.
- 8) Damage from incorrect installation, improper use, abuse or modifications.
- 9) Damage to inbound product due to improper packing.

Hogtunes Inc. is owned by Powersports Audio Inc.

PowerSports
AUDIO INC.

Harley-Davidson, Electra Glide, Road Glide, Street Glide, Ultra Classic, Tri Glide, CVO, Screamin Eagle and Tour-Pak® are Trademarks, and/or Registered Trademarks of Harley-Davidson, Inc., Milwaukee, Wisconsin, USA, and if Used or Implied are for Reference Only. There is No Affiliation Between Harley-Davidson, Inc., and Hogtunes Inc.



Hogtunes products will play much louder than the Original Equipment, which can be a distraction to the rider and/or passenger. Please use caution when adjusting or playing your stereo at high volume, especially in traffic.

You are a valued customer so please:

**Ride Alert
Arrive Alive!**

www.hogtunes.com